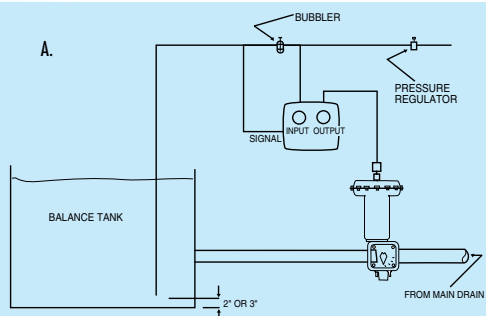


LEVEL CONTROLLERS SAFETY SWITCHES GAUGES ACCESSORIES

A. FISHER C-1 PRESSURE CONTROLLER AND TRANSMITTER

Used wherever durable, dependable, and simply constructed pressure-sensing instrumentation is required. This differential pressure controller provides control of operating level of surge tank or vacuum filter. Pneumatic air signal to modulating valve (not included) maintains level within extremely close tolerances. System includes controller, bubbler, and pressure regulator. Minimum 18 lbs. p.s.i. pneumatic source required. Specify direct or reverse acting.
#1420 C-1 Controller, complete \$3,280.00



C. LEVELOR ELECTRONIC WATER LEVELER

The alternative choice of contractors over mechanical floats. Trouble-free, easy to install and no moving parts. Levelor is a computer-controlled device that automatically detects and replaces a low water condition to a pre-set level. Works well on new and existing pools and spas and also where a constant liquid level is desired like aquariums, ponds, reservoirs, storage tanks, water cooling towers, etc.
#K1100CA Levelor Controller (110V) \$405.00

D. CARLO GAVAZZI LEVEL SENSOR AMPLIFIER, CONDUCTIVE TYPE

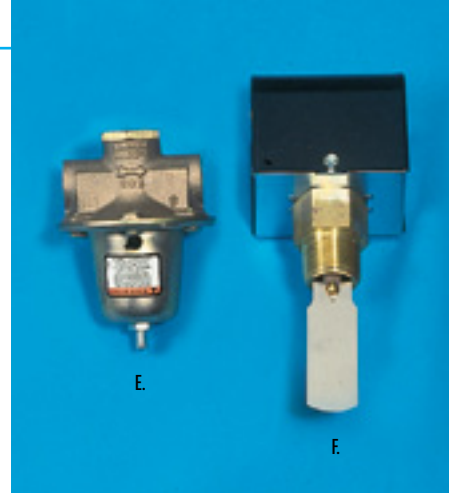
Level control relay for conductive liquids for swimming pool applications. The relay operates approximately 10 seconds after the sensor is no longer immersed in the water. A complete system consists of all components listed below
D1. #S194-156-115 Amplifier \$272.00
D2. #A94-10 Sensor \$139.00
D3. #ZPD11 11-Pole Socket \$22.00



CONTROLLERS

B. WARRICK AUTOMATIC WATER LEVEL CONTROL

To prevent vacuum filter overflow or to automate your city water make up to the swimming pool. This solid state control is more reliable as well as less expensive, compared to electromechanical units. Electrode fittings are available with either 2" pipe thread or 2" standard pipe flange. Electrodes are type 303 stainless steel.
#16ML1A1 Warrick solid state level controller . . . \$234.00
#16ML1A0 Controller relay replacement less housing \$181.00
#3E2B Electrode fitting threaded for two electrodes \$192.00
#3E3B Electrode fitting threaded for three electrodes \$249.00
#3F2E Electrode fitting flanged for two electrodes \$256.00
#3F3E Electrode fitting flanged for three electrodes \$311.00
#3R1C0 Electrode rod 1 ft. length \$13.10/ft.
 NOTE: The third character in item no. indicates rod length. Please designate length when ordering. Add \$11.90 for each additional foot.



SWITCHES & VALVES

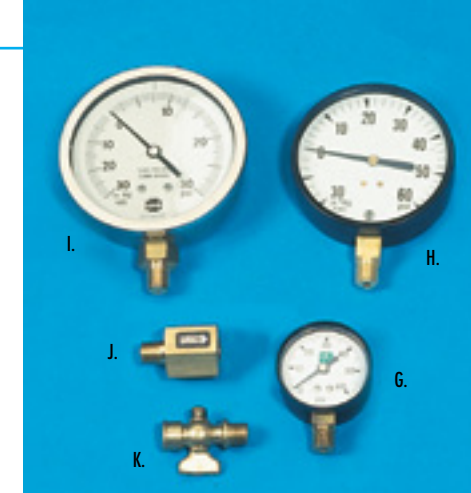
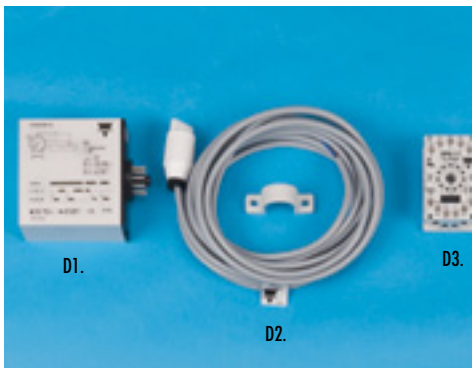
E. MCDONNELL MILLER FLOW SWITCH

The FS250 Series flow switch with a 5 year warranty offers an economical and positive way to start or stop almost anything electrically operated. Actuate a signal light, sound an alarm, start or stop a motor, use wherever it is important to know when flow or no-flow occurs.
#FS251 \$143.00

F. BELL & GOSSETT PRESSURE REDUCING VALVE

Protect plumbing systems against excessive line pressures. Factory set at 12 p.s.i.g., but easily adjustable within the factory set range of 10-25 p.s.i.g. Equipped with built-in strainer and low inlet pressure check valve.
#110190 1/2" Reducing valve. \$48.00
#110196 3/4" Reducing valve \$74.00

TOLL FREE NATIONWIDE
1-800-777-SWIM
 1 8 0 0 7 7 7 7 9 4 6



GAUGES & ACCESSORIES

G. EQUIPMENT GAUGES

Pressure • Vacuum • Compound 1/4" NPT, bottom mount.
2" Diameter, polypropylene case
#1354 Vacuum 0-30 Hg \$8.90
#1354-30 Pressure 0-30 p.s.i. \$8.00
#1354-60 Pressure 0-60 p.s.i. \$8.00
#1354-60B Pressure 0-60 p.s.i. 1/4" Backmount Connection \$8.00
2" Diameter, steel case
#1355 Vacuum 0-30 Hg \$8.90
#1355-30 Pressure 0-30 p.s.i. \$8.25
#1355-60 Pressure 0-60 p.s.i. \$8.25
#1355-60B Pressure 0-60 p.s.i. 1/4" Backmount Connection \$8.25
3 1/2" diameter - steel case
#1356-30 Pressure 0-30 p.s.i. \$19.60
#1356-60 Pressure 0-60 p.s.i. \$19.60
#1356-100 Pressure 0-100 p.s.i. \$19.60
#1357 Vacuum 0-30 Hg \$19.60
#1358 Compound 30 Hg-0-60 p.s.i. \$19.60
4 1/2" diameter - steel case
#1360* Vacuum 0-30 Hg. \$36.80
#1361* Compound 30 Hg-0-60 p.s.i. \$36.80

*Limited Quantities Available

I. Liquid filled gauges 4" diameter - stainless steel case
#1364 Vacuum 0-30 Hg \$60.30
#1365 Compound 30 Hg-0-15 p.s.i. \$60.30
#1366-30 Pressure 0-30 p.s.i. \$60.30
#1366-60 Pressure 0-60 p.s.i. \$60.30
#1366-100 Pressure 0-100 p.s.i. \$60.30
Liquid filled gauges 2.5" diameter - stainless steel case 1/4" NPT
#9767053 60 p.s.i. \$21.10
#9767002 30" vacuum. \$21.10
#9767029 Compound 30" 0-60 p.s.i. \$21.10

Accessories

J. Pressure snubber to protect gauges from pulsation and shock. 1/4" NPT x 1/4" FPT brass construction.
#1367 \$23.80
K. Tee handle gauge cock. 1/4" NPT x 1/4" FPT brass construction.
#1362 \$11.30