

# ENERGY SAVING SYSTEMS

## Filtrex INCORPORATED

Filtrex regenerative diatomaceous earth filters eliminate the need to backwash . . . saving makeup water, chemicals and heating energy. Filtrex provides unequalled water clarity – up to 99% effective in removing contaminants down to 1 micron.

Halogen has over 350 Filtrex installations. Call for references in your area.



### REGENERATIVE FILTER CONTROLLER

#### SOLID STATE CONTROLLERS AUTOMATE THE ENTIRE FILTRATION PROCESS

**Fast!**—MOD 1 SSC automatically completes scheduled regenerations of the filter media in just six minutes . . . saving manpower, energy, water and filter aid.

**Reliable!**—Solid state circuitry provides years of trouble-free performance.

**User Friendly!**—3 button operation, LED annunciator and step-by-step instruction menu printed on door.

### REGENERATIVE D. E. FILTERS

Halogen was the first in the nation and remains as the midwest supplier of Filtrex regenerative diatomaceous earth filters. Filtrex's advanced technology combines the exclusive Flex-Tube™ filter element with a proven system of precoat regeneration to eliminate the need for continuous slurry feed throughout the filter cycle. The New Vacuum Transfer System, now standard on all New Filtrex Systems, allows for quick and easy filter precoat and eliminates airborne diatomaceous earth previously associated with the old precoat tank. Existing Filtrex Systems can also be retrofit with the New Vacuum Transfer System. Call us toll free for more information.

### EPD FRP HIGH RATE SAND FILTERS



The FRP (Fiberglass Reinforced Plastic) tank high rate sand filter system combines the quality you have come to expect in an EPD system with a uniquely designed totally non-corrosive vessel. The EPD FRP filtration system provides 17 square feet of filter area per 36" diameter tank. The systems are available in a single (1) through eight (8) tank configuration that affords flow rates of 51 to 2720 gpm at a 100 psi working pressure. EPD FRP filtration systems can be purchased with a semi-automatic, fully automatic, or pressure differential controller.

### EPD POLY LINED STEEL HIGH RATE SAND FILTERS

EPD has utilized the latest in plastics technology to bring you the new Poly lined steel filter vessels (50 and 100 psi models) which combine the corrosion durability of linear low-density polyethylene with the strength of steel. The monolithic liner means the need for cathodic protection is eliminated. These new poly lined steel tanks can be ordered with 13.5 or 16.5 sq. ft. of filter area per tank in single through (8) tank configurations with the automatic filter controller, the EPD Hi-Rate sand filtration system does not require supervision of its day to day operation. Operating and maintenance costs, normally associated with commercial filtration systems, are non-existent. The automatic backwash control console is programmed to perform all of the filtration and backwash functions automatically 24 hours per day, 365 days per year. Systems can be also purchased with semi-automatic and pressure differential controllers.

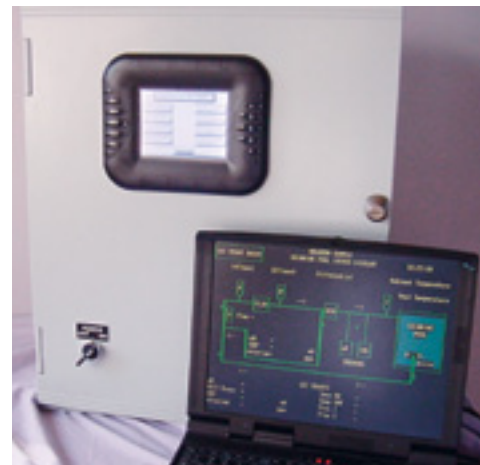
### DANFOSS VLT ADJUSTABLE FREQUENCY DRIVES



Danfoss VLT - HVAC adjustable frequency drive offers a list of features and ease-of-use unmatched in the industry. On it's own or when matched with our "Watermaster" energy management system (below) to provide state-of-the-art control of your pool and save you thousands of dollars in energy annually. Halogen was the first to implement this technology in our industry and 20 years later we are still the best at maximizing it's benefits for you. Call and talk to one of our technical advisors on the advantages of this time-proven approach to energy savings.

#VLT 6000 Adjustable Frequency Drive . . . . . Price on Request

### WATERMASTER EMS POOL ENERGY MANAGEMENT SYSTEM CONTROLLER



State-of-the-art control of flowrate, pH & sanitizer levels, and water temperature. High quality touch-screen provides digital display of all eight control parameters. This unit functions as a digital flowmeter, water chemistry controller, and temperature control system ( $\pm 0.5^\circ F$ ). Internal modem router and communication software are standard. Complete package includes pH and ORP mixing chamber with probes, two (2) temperature sensors, two (2) pressure transducers, flow sensor w/pipe saddle, and a NEMA 4 cabinet. (Laptop computer not included)

#### Features:

- Pump flowrate control • Flowmeter • Chemical controller; pH & ppm
  - Temperature control  $\pm 0.5$  deg. F • Mixed water hi-limit shutoff • Differential pressure.
- Weight 50 lbs. Power requirement 120 V 15 Amp.

**EXCLUSIVELY FROM HALOGEN** – When our adjustable frequency drive (VFD) package is added, the WaterMaster EMS can control your circulation pump speed, for thousands of dollars of yearly energy savings. Talk to one of our technical advisors for more information on the advantages of this time-proven approach to reduction of operating costs. #1608WM WaterMaster EMS System. . . . . Price on Request