

VIRGINIA GRAEME-BAKER POOL & SPA SAFETY ACT

By December 19, 2008 ALL public pool owners must

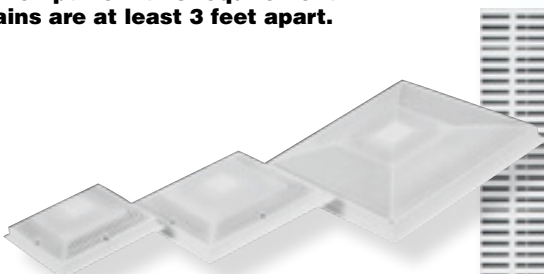
- Install drain covers that meet ANSI/ASME A112.19.8-2007 standard on EVERY drain/grate.
- Install an automatic shut-off system, gravity drainage system, Safety Vacuum Release system (SRVS), suction-limiting vent system or disable the drain, if the pool operates off of a SINGLE main drain. Pools and spas with unblockable drains are exempt from this requirement.
 - Ensure that dual or multiple main drains are at least 3 feet apart.

WARNING: Installing a VGB Act approved grate does not necessarily establish compliance. ONLY a professional design engineer or your local health department can help you to confirm that all criteria of the act have been met.

FRAME AND GRATES

HAYWARD

MODEL NUMBER	DESCRIPTION	GPM@1.5 FPS	OPEN AREA SQ. IN.	PRICE
#WX1048E	8" Round Grate Only	37	8.1	\$20.55
#WG1030AVPAK2	8" Round Frame and Grate	37	8.1	\$33.00
#WX1031B	9" x 9" Cover & Inner Frame	83	17.81	\$73.00
#WG1032PAK2	12" X 12" Cover, Inner & Outer Frame	151	32.37	\$168.00
#WX1032B	12" X 12" Cover, Inner Frame	151	32.37	\$88.00
#WG1033PAK2	18" X 18" Cover, Inner & Outer Frame	333	71.25	\$563.00



LAWSON

MODEL NUMBER	DESCRIPTION	GPM@1.5 FPS	OPEN AREA SQ. IN.	PRICE
MLD-FGD-0909-WT	9" x 9" Frame & Grate	197	42.12	\$152.00
MLD-FGD-1212-WT	12" x 12" Frame & Grate	380	81.30	\$210.00
MLD-FGD-1818-WT	18" x 18" Frame & Grate	855	183.06	\$315.00
MLD-FG-2424-WT	24" x 24" Frame & Grate	1009	216.00	\$546.00



24x24 & LARGER

24x24 • 24x48 • 30x52 • 36x120!

*MLD-FG-2424-PLUS - Larger than 24 x 24 Frame & Grate

Call for Specs and Price on Application

*We can make virtually any size drain.

Available in one inch increments in one direction and no more than 21" unsupported span in the other direction

EUREKA

MODEL NUMBER	FOR MAIN DRAINS SIZES UP TO	GPM@1.5 FPS	OPEN AREA SQ. IN.	PRICE
#20X20AV	12" X 12"	344	73.60	\$866.00
#26X26AV	18" X 18"	495	108.90	\$1024.00
#32X32AV	24" X 24"	675	144.50	\$1321.00
#44X44AV	36" X 36"	975	209.10	\$1768.00

F.O.B. FACTORY

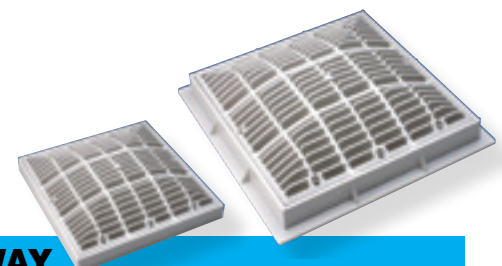


WATERWAY

MODEL NUMBER	DESCRIPTION	GPM@1.5 FPS	SQ. IN.	PRICE
#640-4730V	9" x 9" Grate Only	186	39.90	\$54.00
#640-4740V	12" x 12" Grate Only	292	62.40	\$74.00
#640-4750V	18" x 18" Frame & Grate	744	159.60	\$404.00

*FITS EXISTING 3/4" DEEP FRAMES WITH FOUR HOLE SCREW PATTERN

**FITS EXISTING 1" DEEP FRAMES WITH EIGHT HOLE SCREW PATTERN



AQUASTAR

MODEL NUMBER	DESCRIPTION	GPM@1.5 FPS	OPEN AREA SQ. IN.	PRICE
#WAV9101*	9" x 9" Frame & Grate	207	44.20	\$126.00
#RWAV9101**	9" x 9" Grate Only	207	44.20	\$130.00
#WAV12101*	12" x 12" Frame & Grate	400	85.20	\$147.00
#RWAV12101**	12" x 12" Grate Only	400	85.20	\$155.00
#WAV18101	18" x 18" Frame & Grate	828	176.80	\$357.00
#AS24101	24" x 24" Frame & Grate	1645	352.00	\$826.00

*FITS EXISTING 3/4" DEEP FRAMES WITH FOUR HOLE SCREW PATTERN

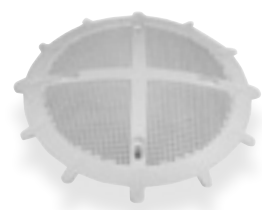
**FITS EXISTING 1" DEEP FRAMES WITH EIGHT HOLE SCREW PATTERN



DRAINSAFE (Anti Entrapment Suction Outlet Cover)

The DS360 is certified 123 gallons per minute @ 1.5 fps. Product certification: ANSI/NSF Standard 50 Certified. Pool cleaner friendly allows for ease of brushing and vacuuming during maintenance operations. Overall Measurement 11 inch, Open surface area: 18.75 sq. in.

DS-360 \$73.00



Universal Drain Cover
Concrete, Vinyl & Equalizer Pools



SDX RETRO HIGH-FLOW SAFETY DRAIN
Submerged suction outlet for single or multiple drain use for use on wall and floor
10" round, 43.20 square inch open area over 200 gallons per minute @ 1.5 fps
SDX-RETRO-WHT \$46.75

TOLL FREE NATIONWIDE
1-800-777-SWIM
1-800-777-7946